

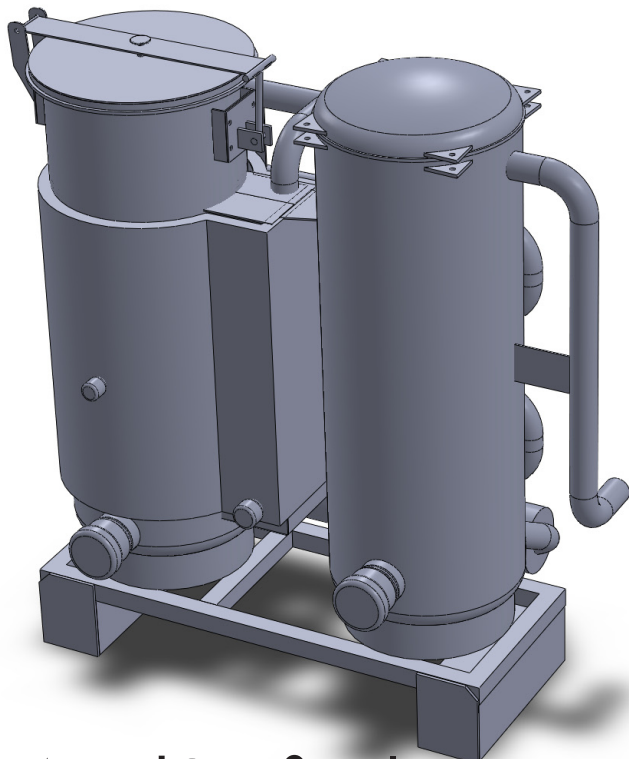
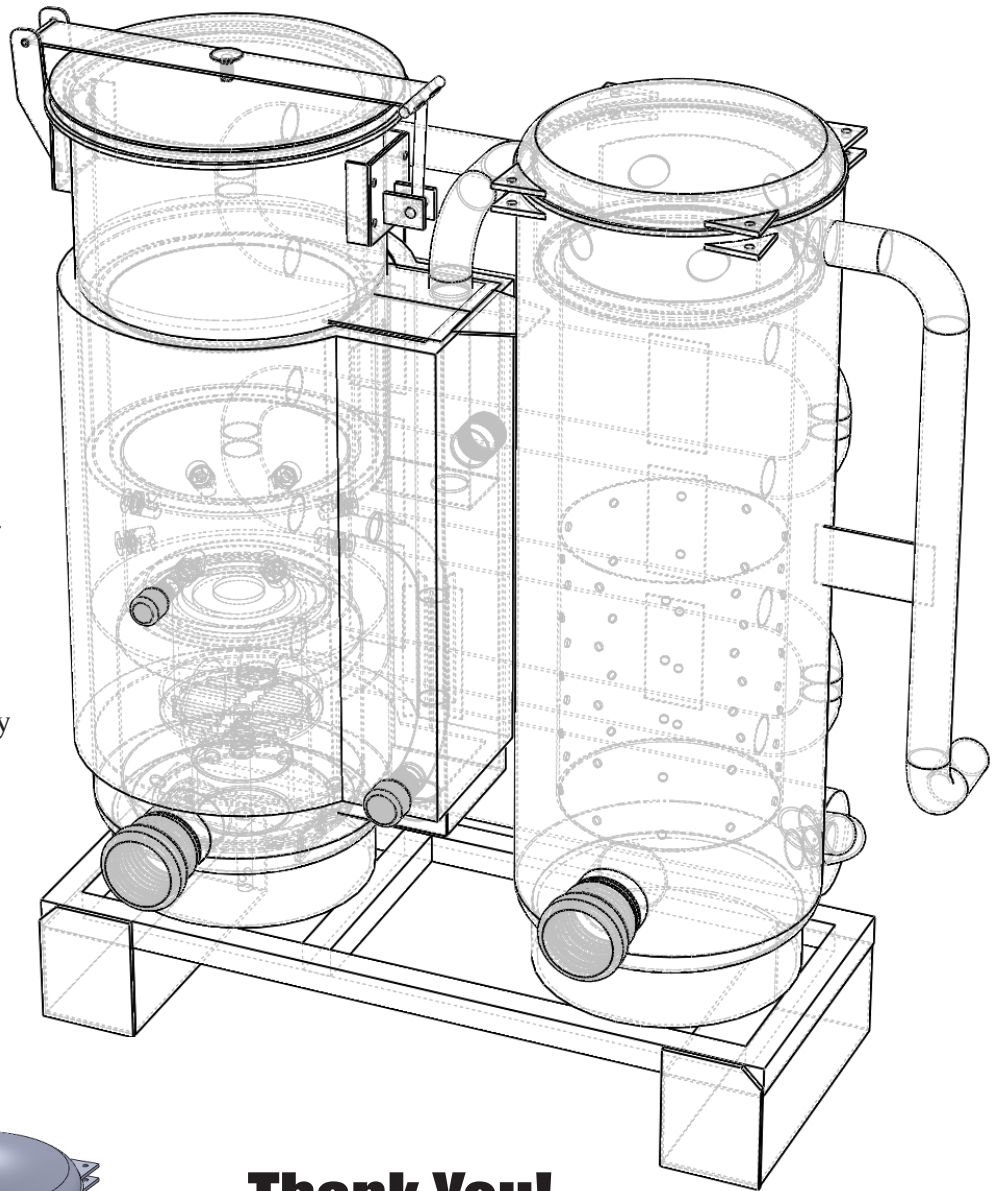
Wood Gasifier Builder's Bible

Bonus Assembly Drawings

For owners of the **Wood Gasifier Builder's Bible** we put together these technical line drawings to make the book's step by step process even more clear and easy to follow.

Cad dxf files of the individual flat metal parts will be released soon for an additional charge. Look for those on our web store:
WoodGasifierPlans.com/order
in January 2015.

The flat part files will make it easy to have parts laser cut and save you a ton of time.

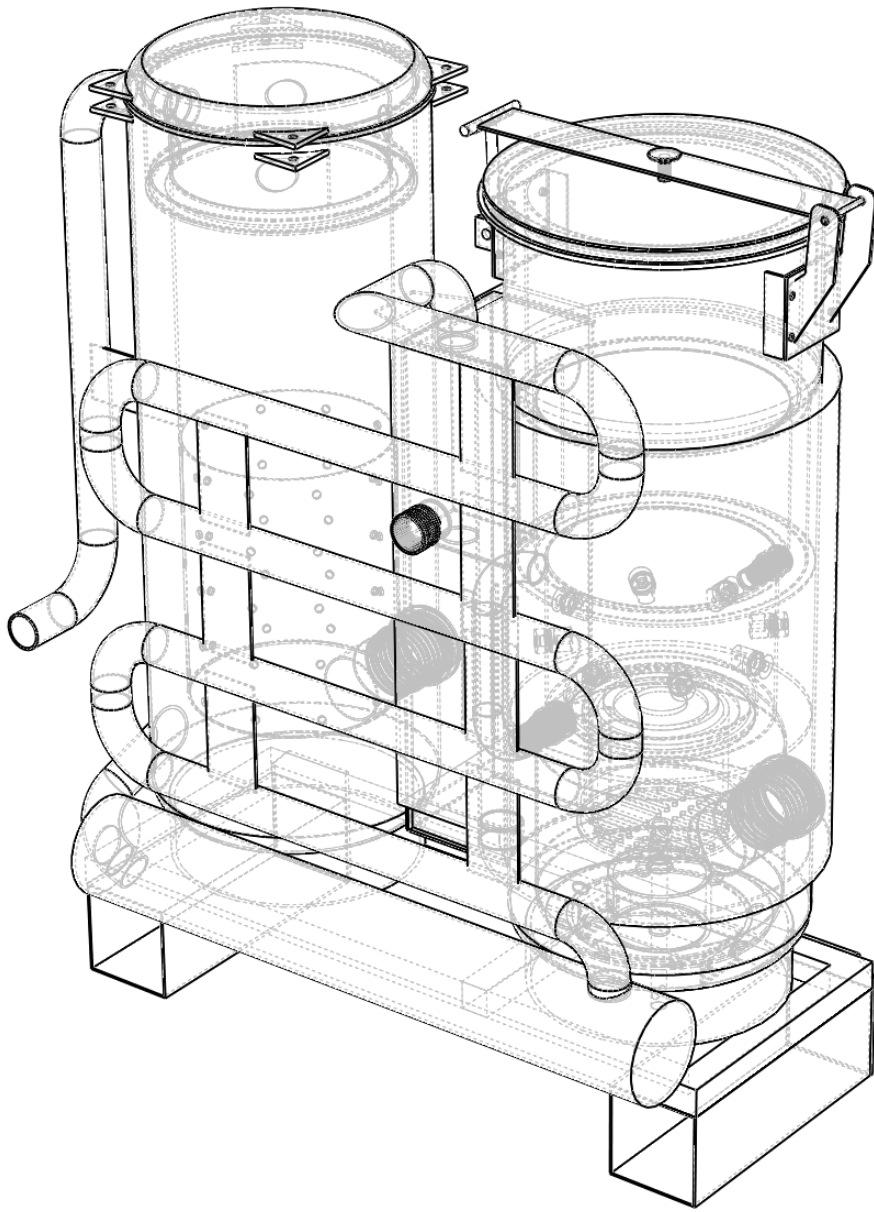


Thank You! This was made possible by your support

A portion of the book sales were used to commission these drawings and we are happy to announce that we are donating boxes and boxes of books to schools and technical colleges in the first quarter of 2015. Something like 250+ books. All made possible by your purchase.

Look for more great stuff coming later in the year. More resources and updates available at:
www.WoodGasifierPlans.com/Builder-Resources

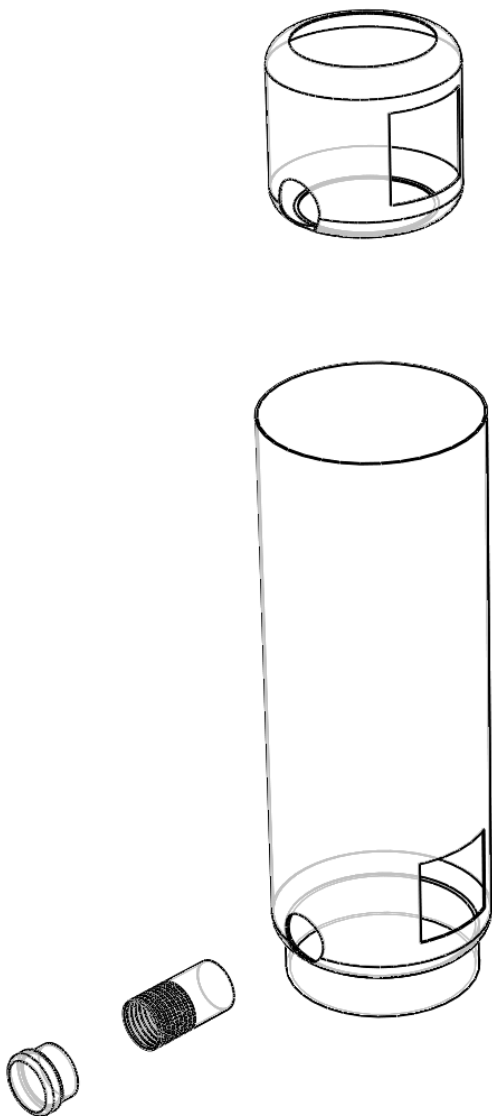
Thanks,
Ben Peterson
Author of the Wood Gasifier Builder's Bible



Let's get assembling
Turn the page to start

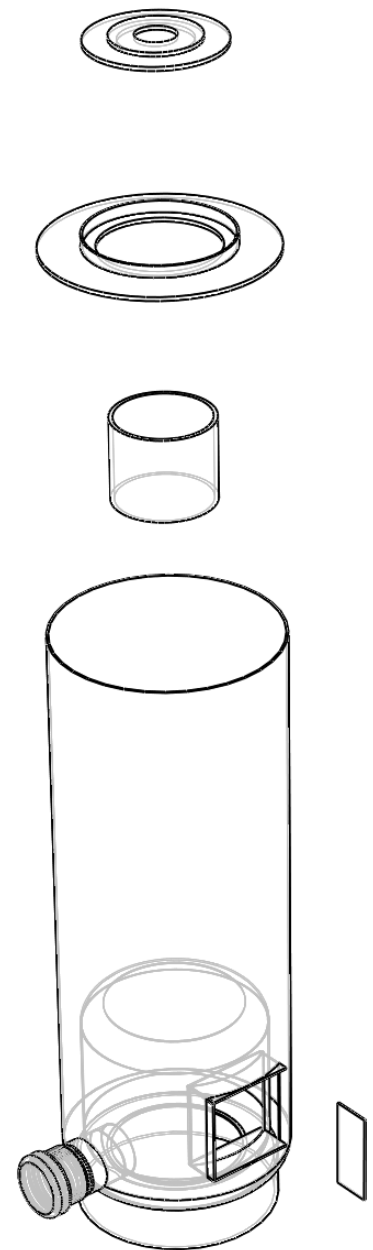
Pages 20-25

This drawing covers the ash clean out port and reduction insulator shell



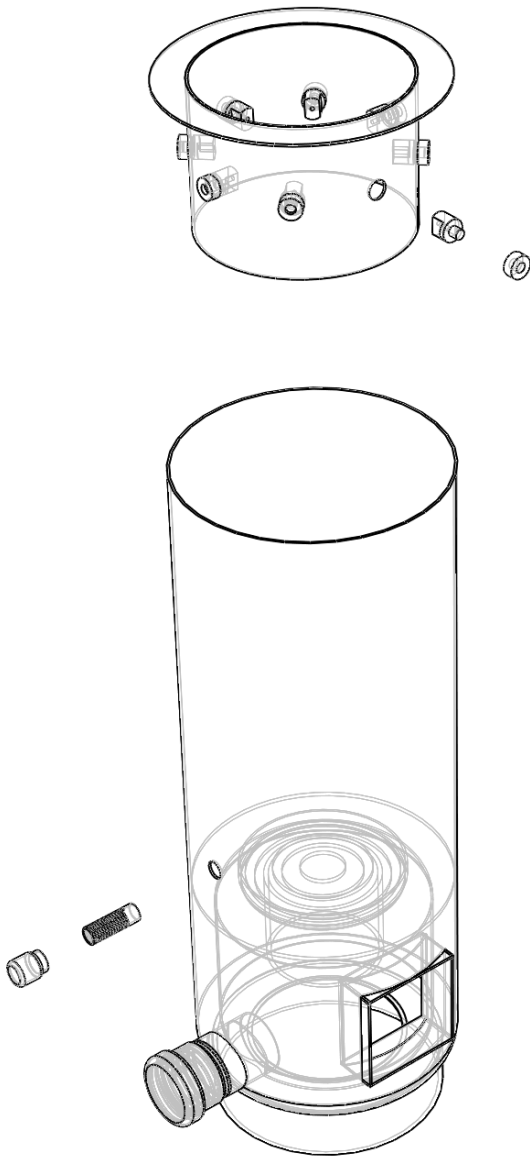
Pages 26-32

This drawing covers the gas exit, choke mantle and choke/reduction plate



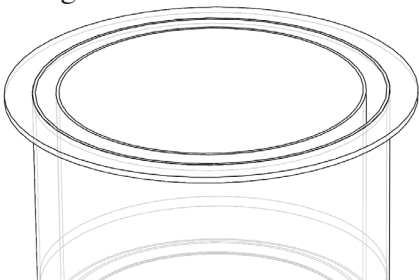
Pages 33-49

This drawing covers the air jacket, jets and ignition port.



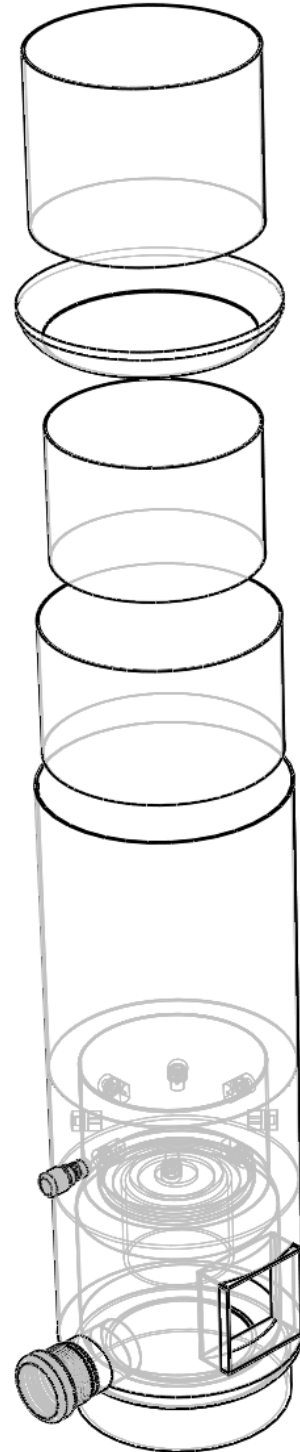
Pages 58-59

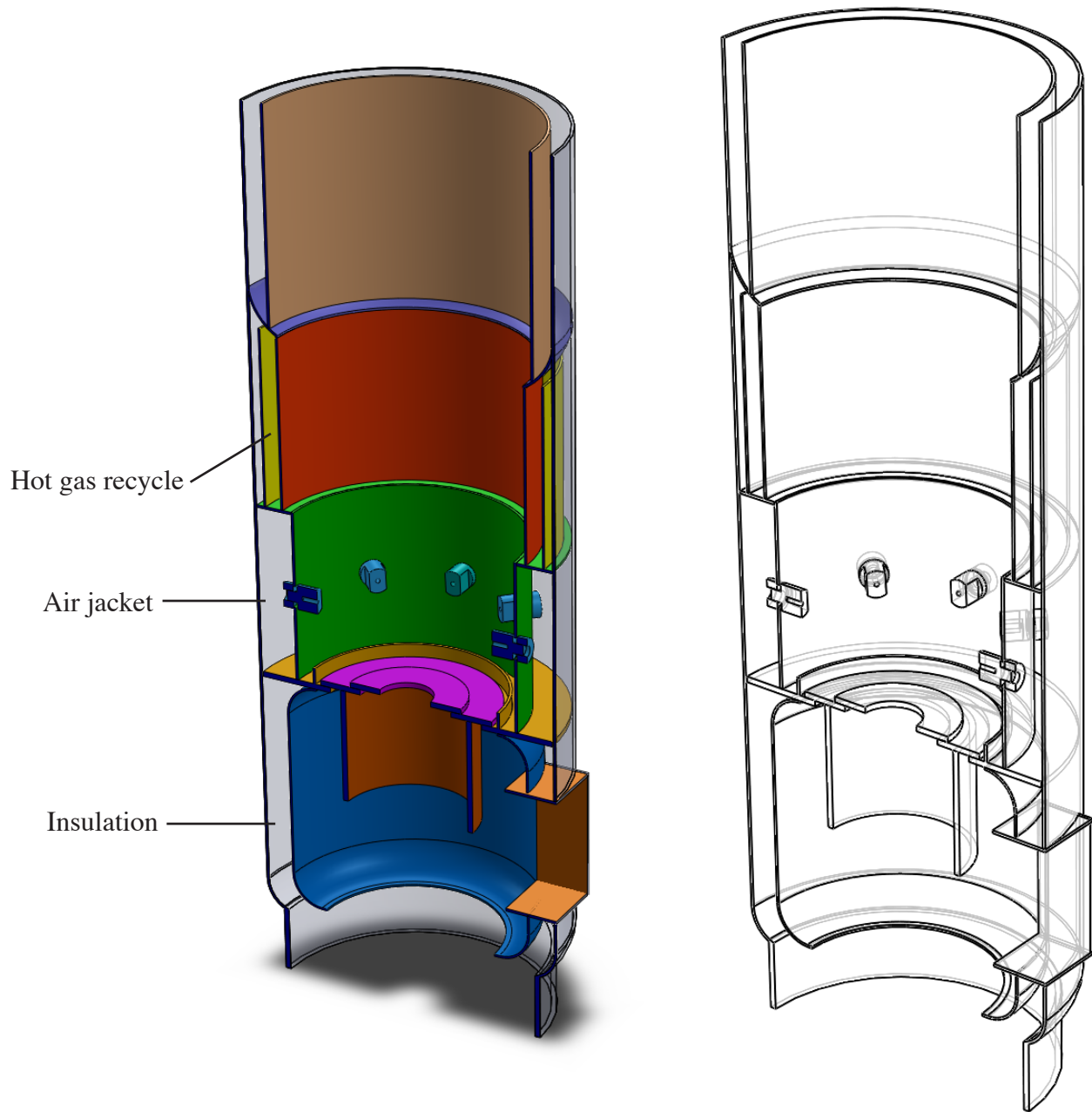
This drawing covers the lid flange.



Pages 50-57

This drawing covers the pyrolysis accelerator and condensate catch.



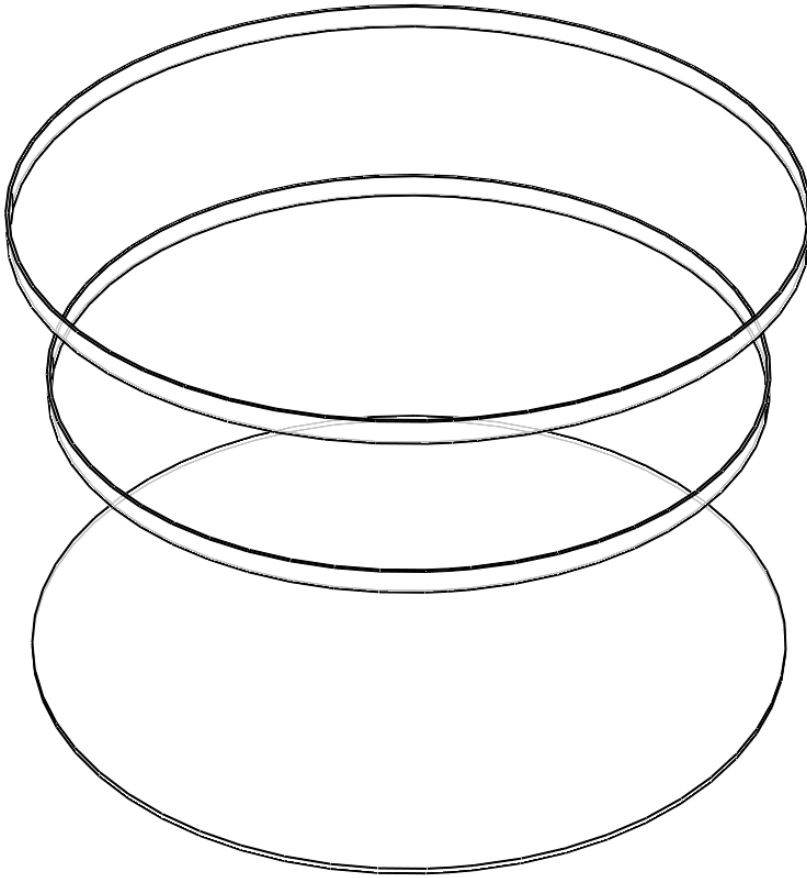


Cross Section Views

These drawing summarize the previous steps in a cross sectional view.

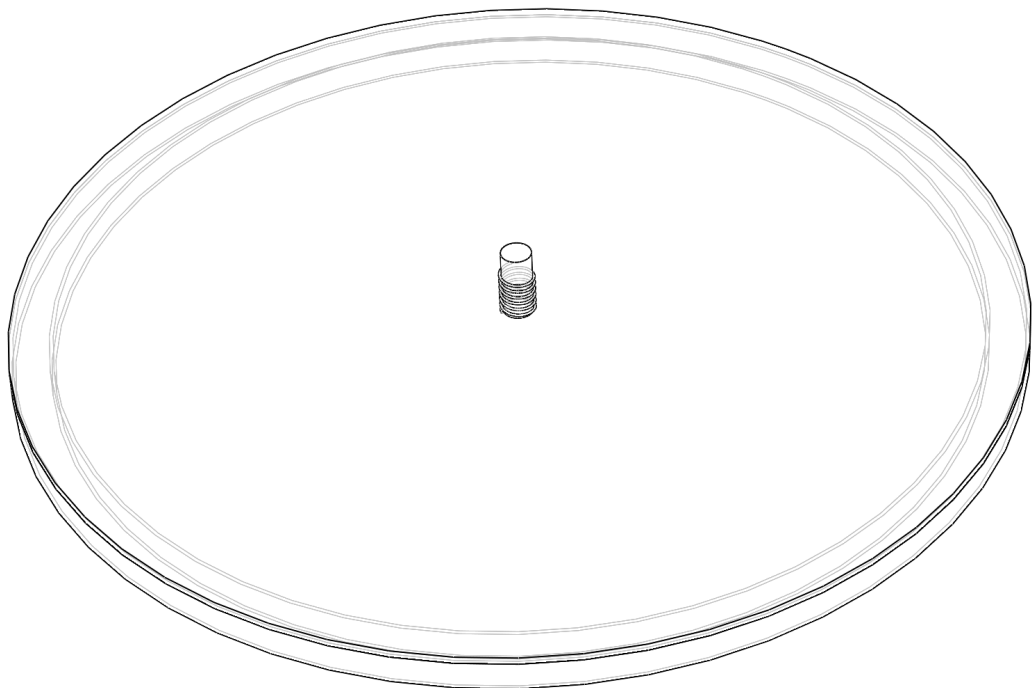
Pages 60-61

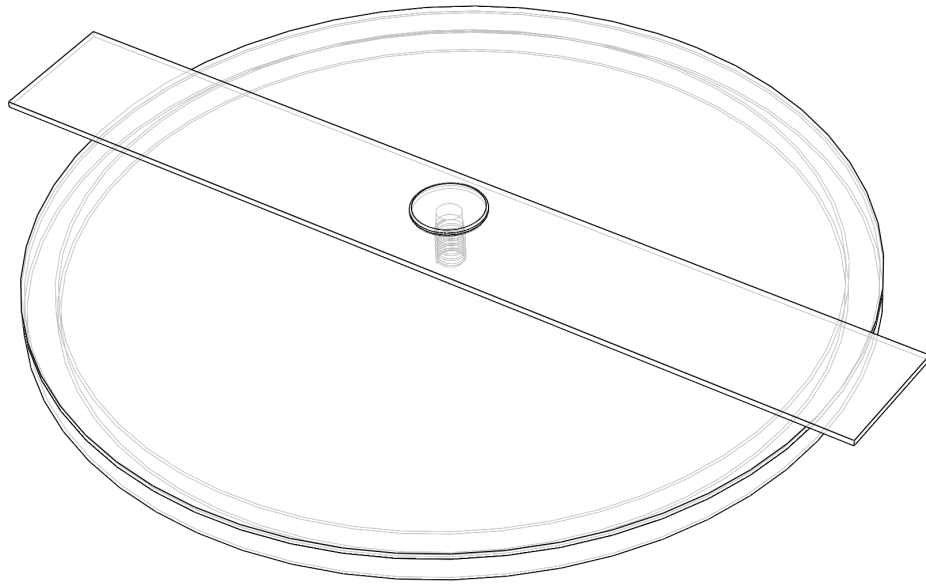
This drawing covers the lid gasket ring.



Page 61

This drawing covers the lid spring.



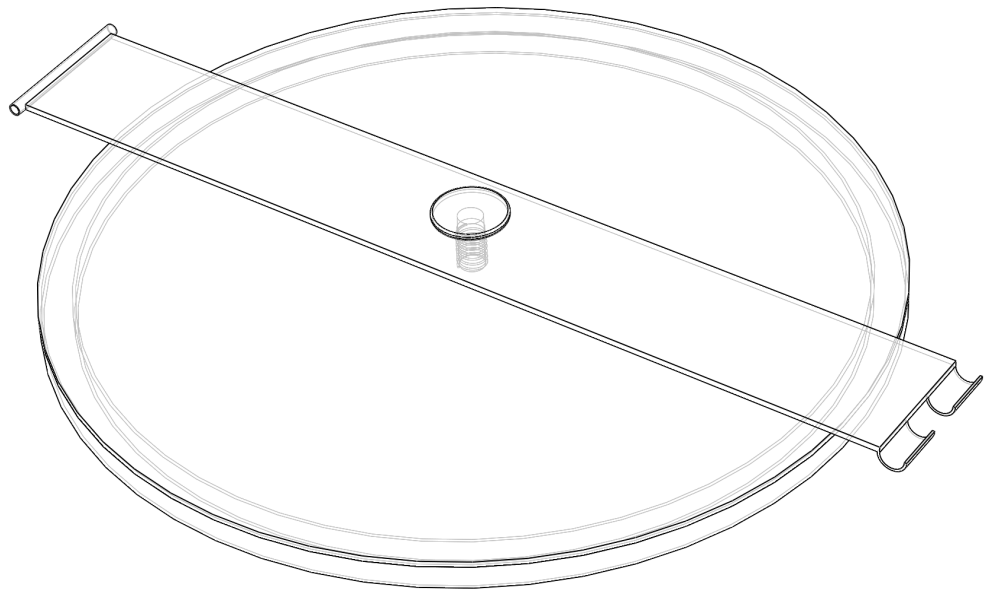


Pages 63-65

This drawing covers the lid cross bar.

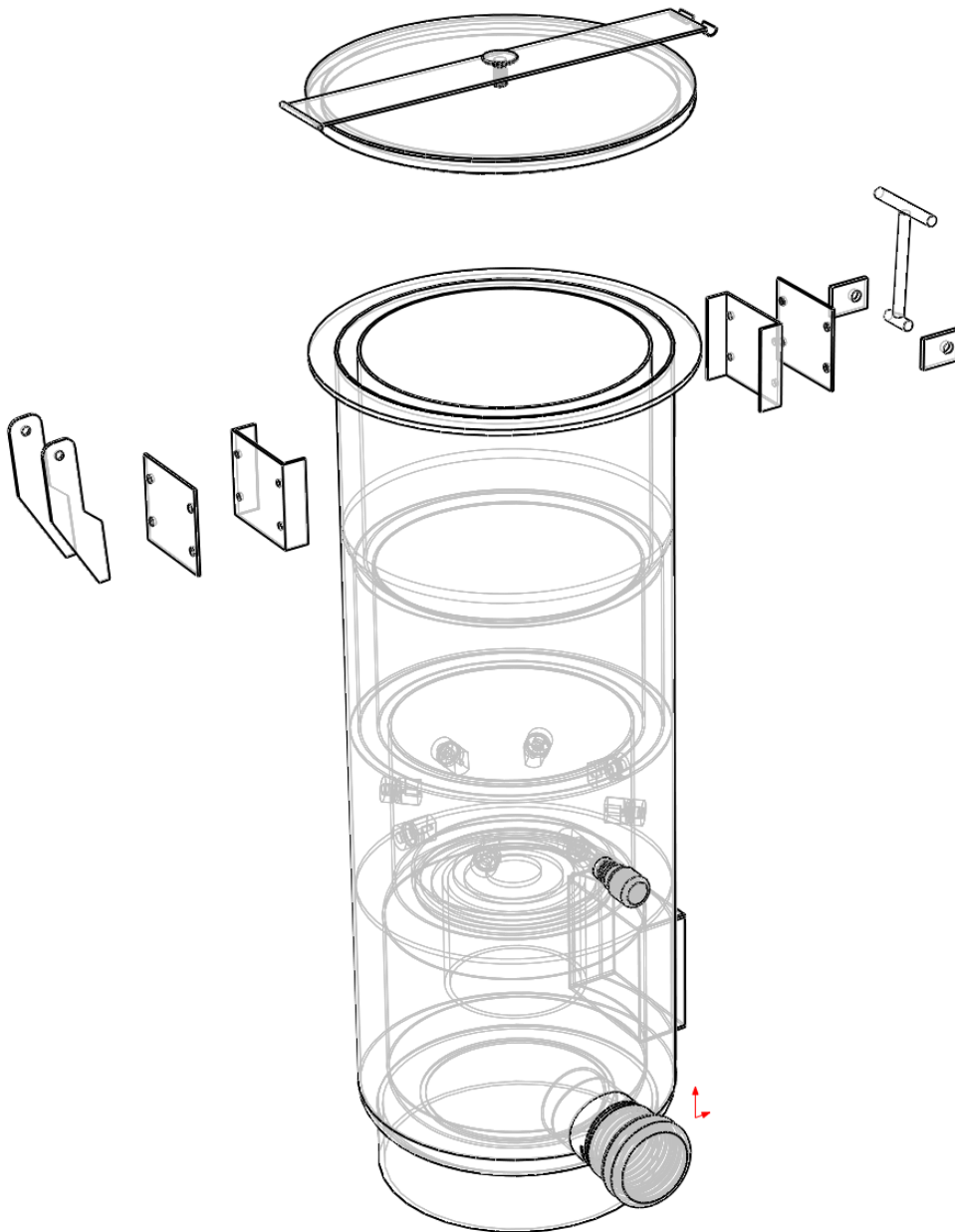
Page 66

This drawing covers the lid hinge and catch.



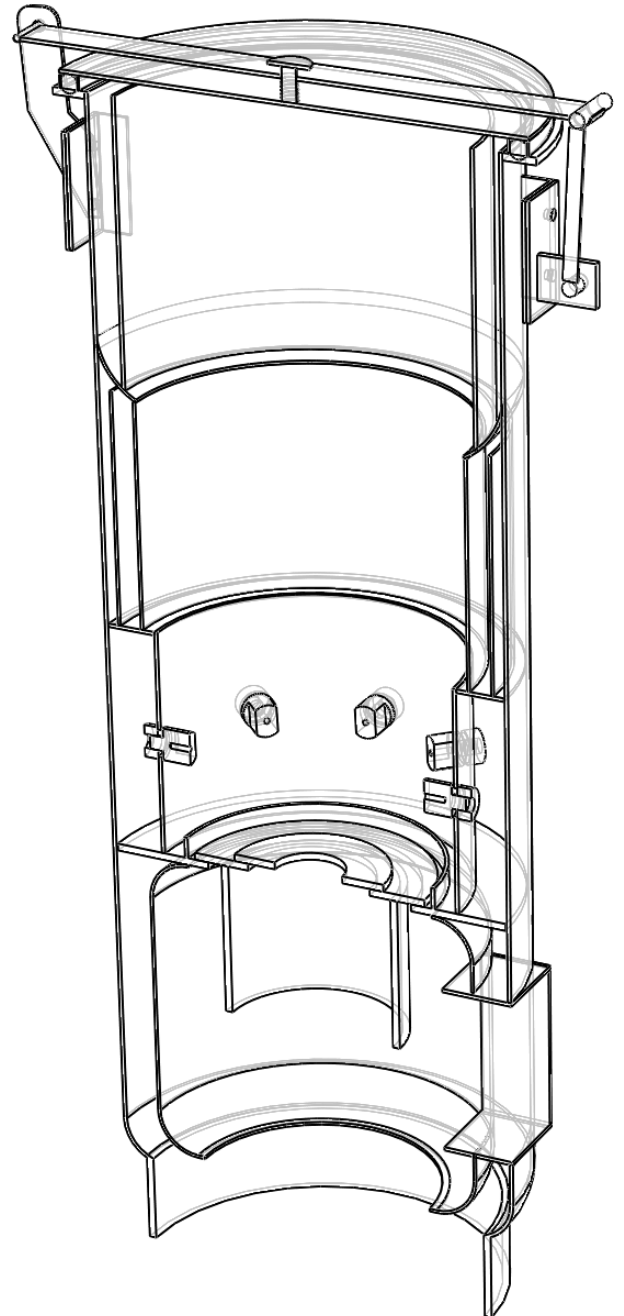
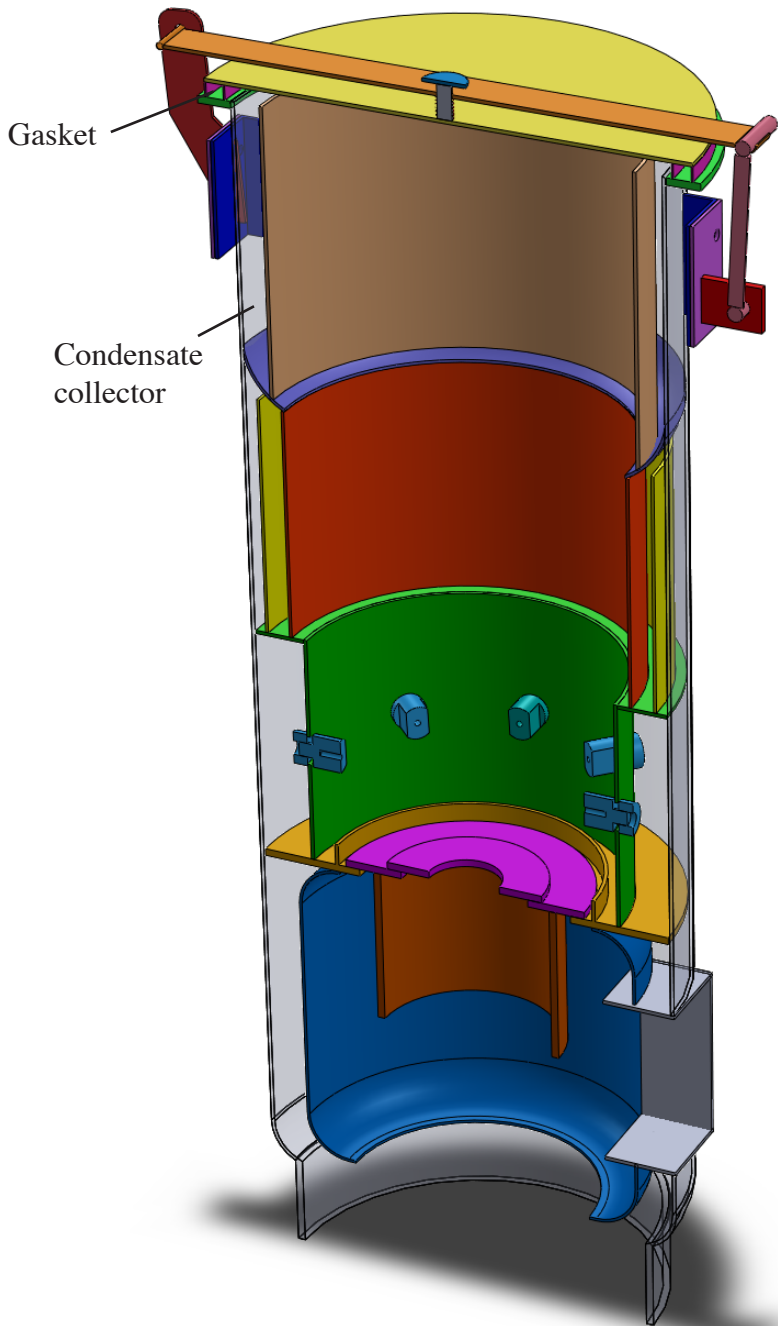
Pages 67-71

This drawing covers the lid hinge and catchment assembly.



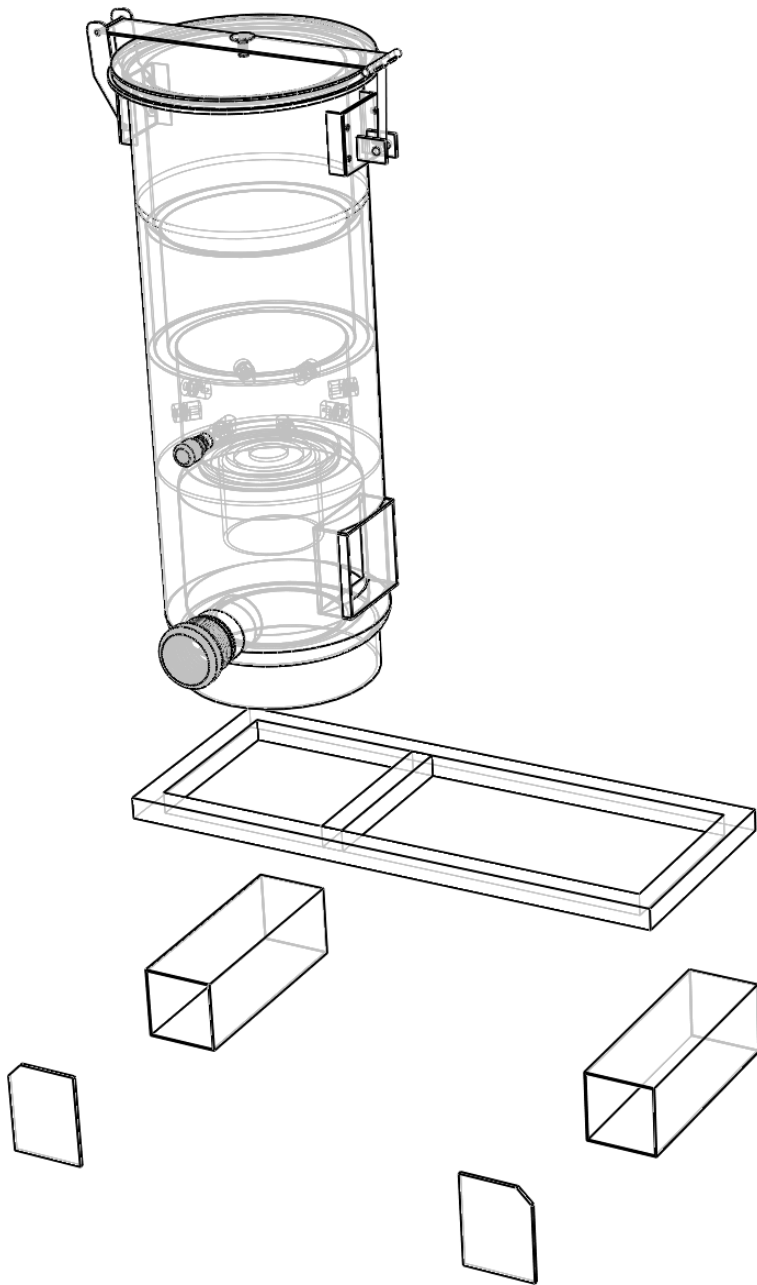
Cross Section Views

These drawing summarize the previous steps in a cross sectional view.



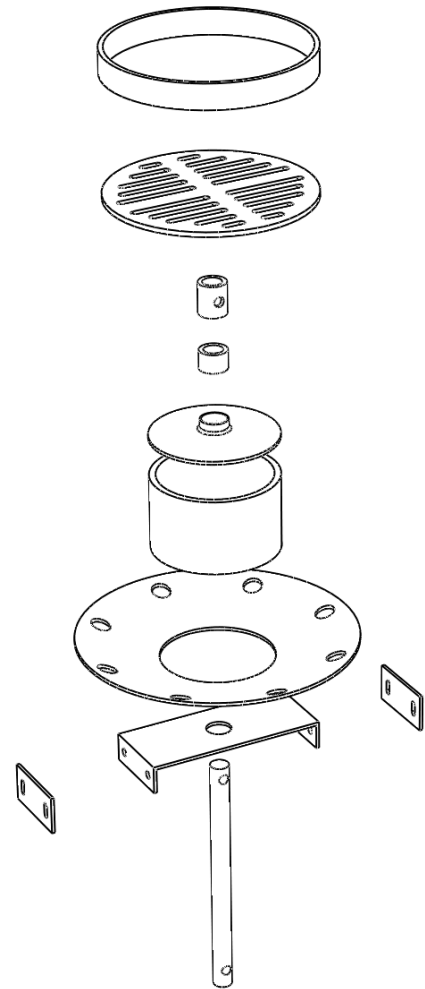
Pages 72-74

This drawing covers the base frame.



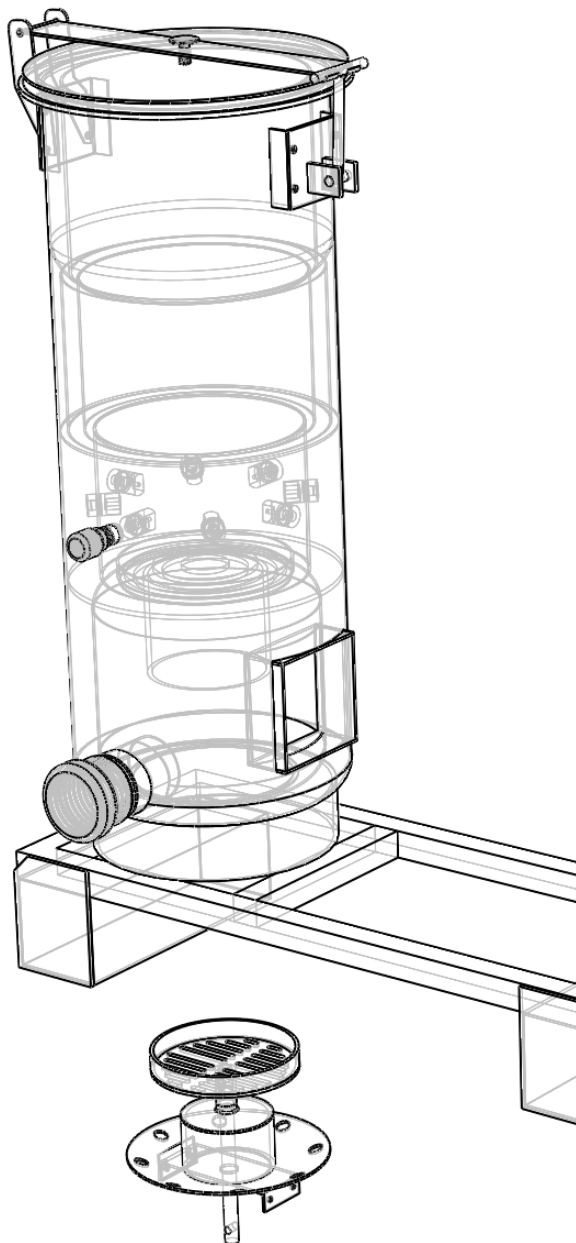
Pages 75-83

This drawing covers the grate assembly.



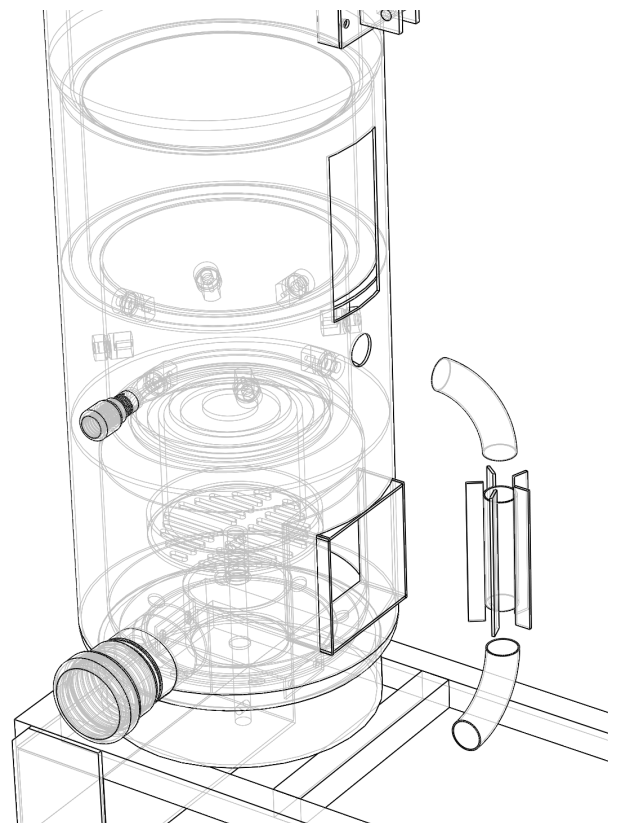
Page 84

This drawing covers the grate assembly installation.



Page 85-89

These pages are best covered with the photos in the book.

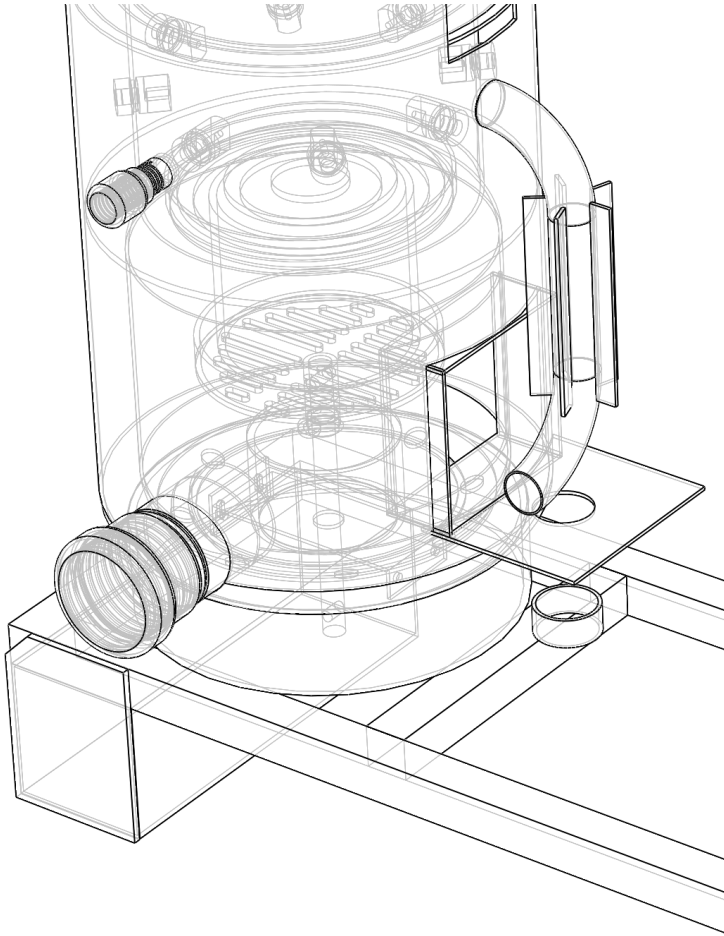


Pages 90-94

This drawing covers the air preheater tube.

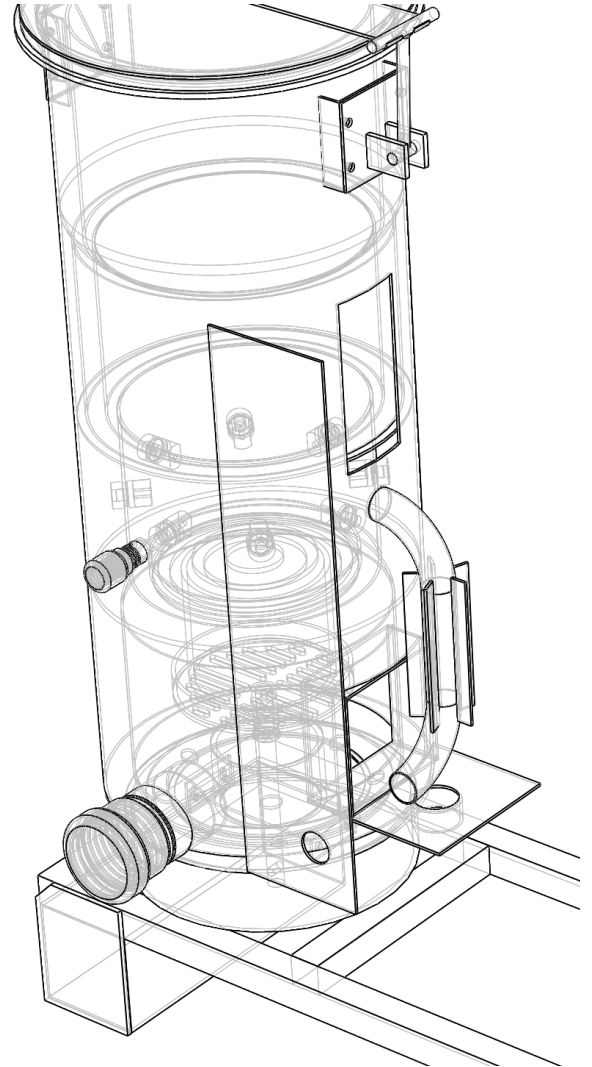
Pages 95-96

This drawing covers the heat recycling box.



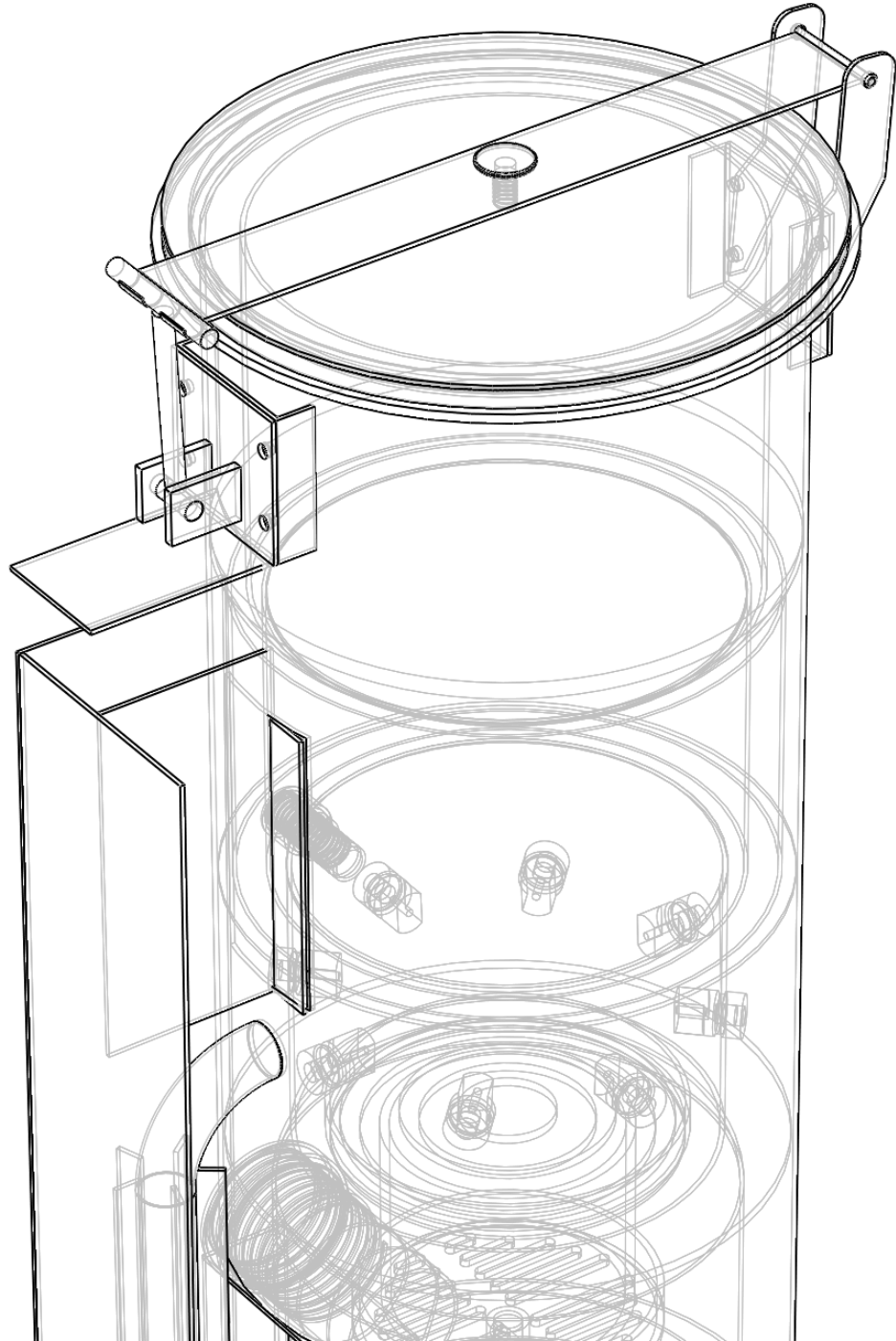
Pages 97-98

This drawing covers the heat recycling box.



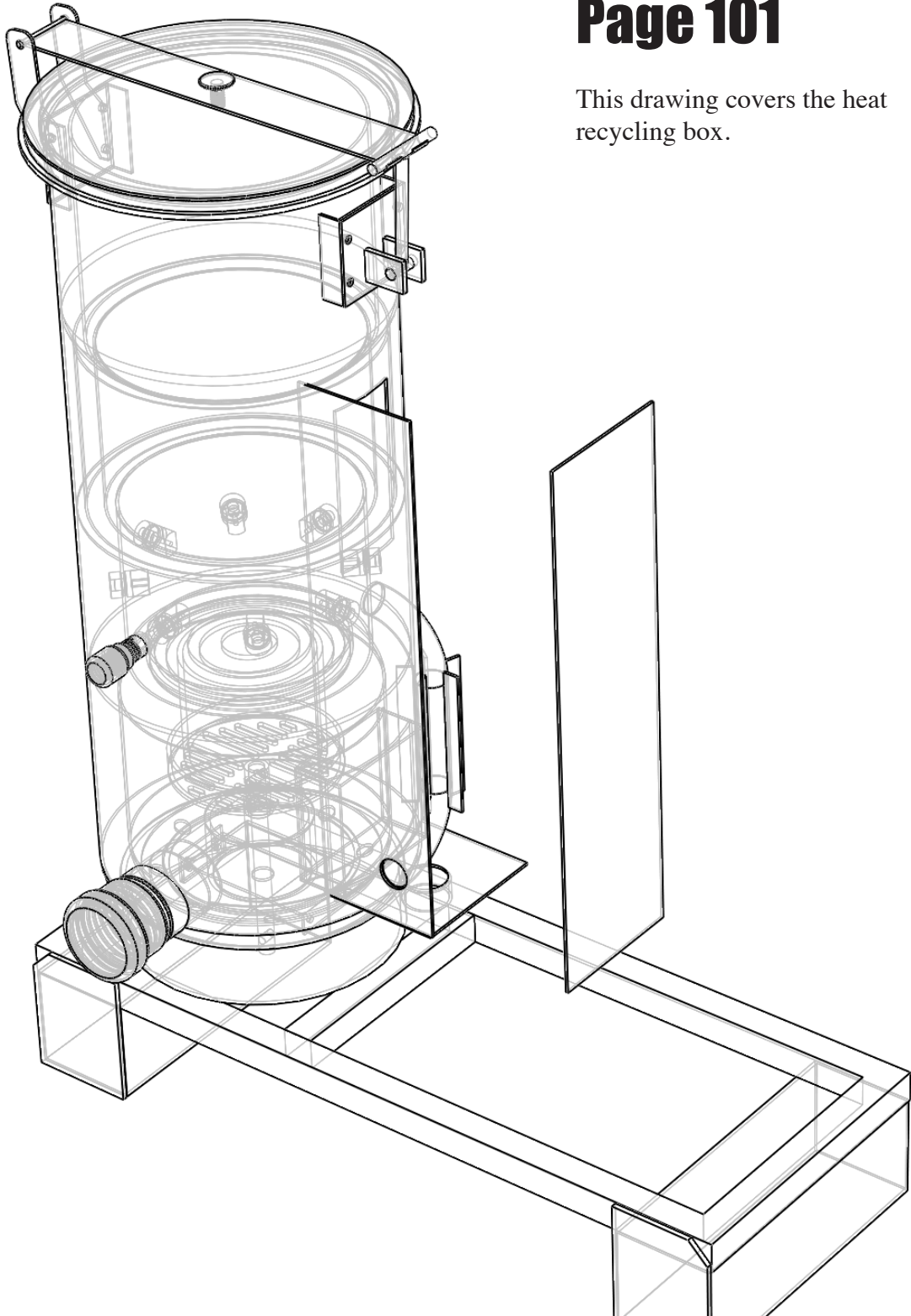
Pages 99-101

This drawing covers the heat recycling box.



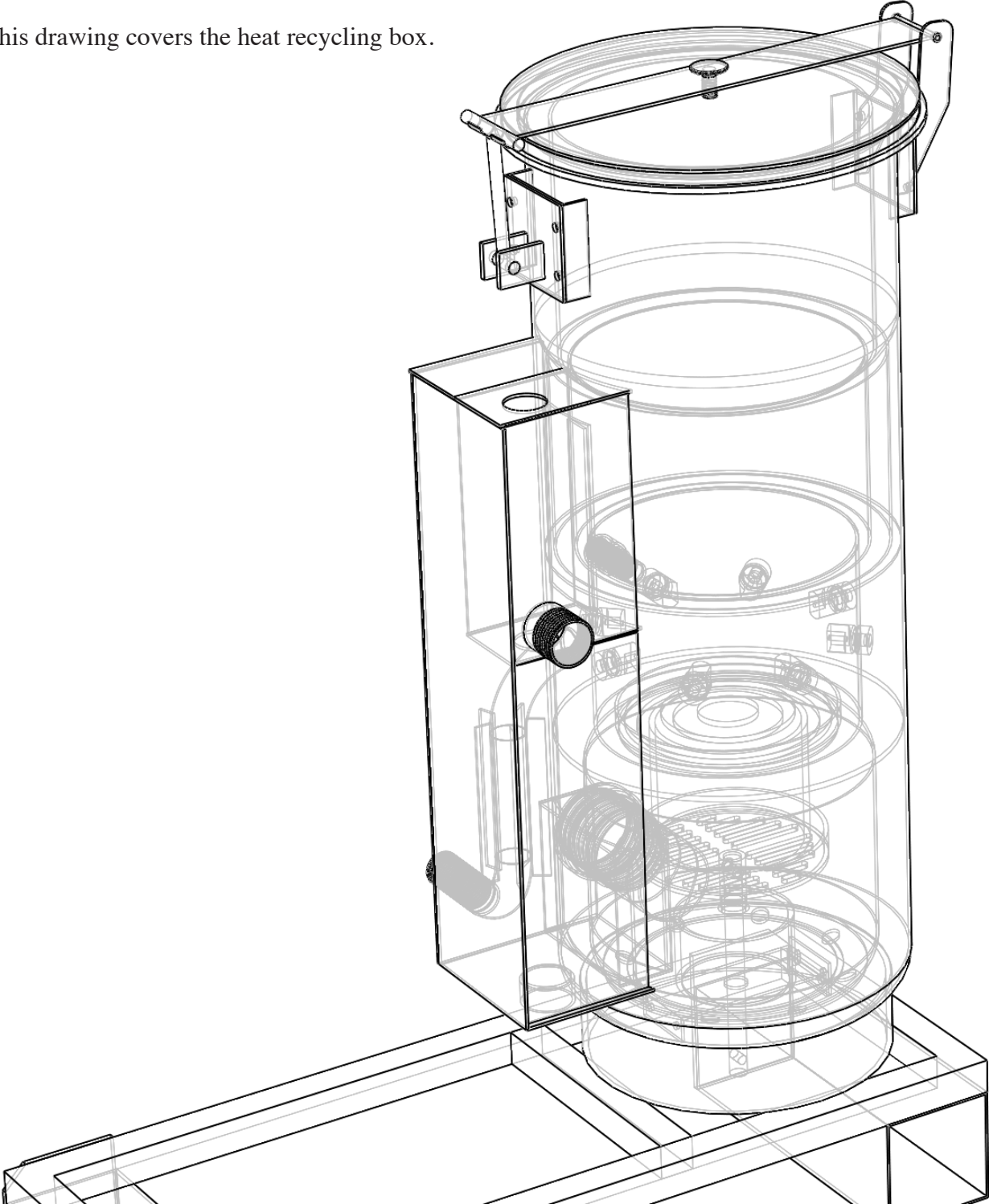
Page 101

This drawing covers the heat recycling box.



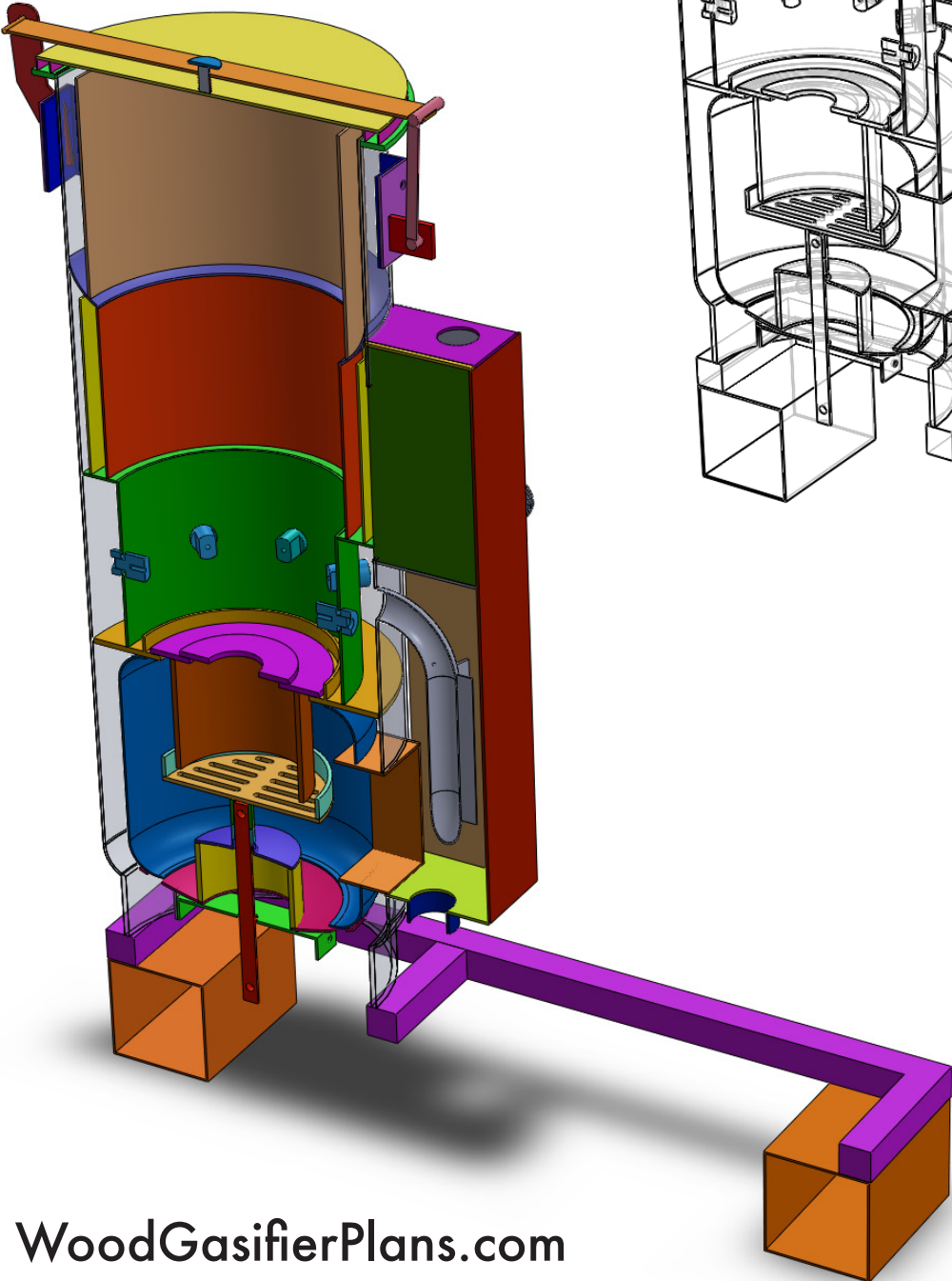
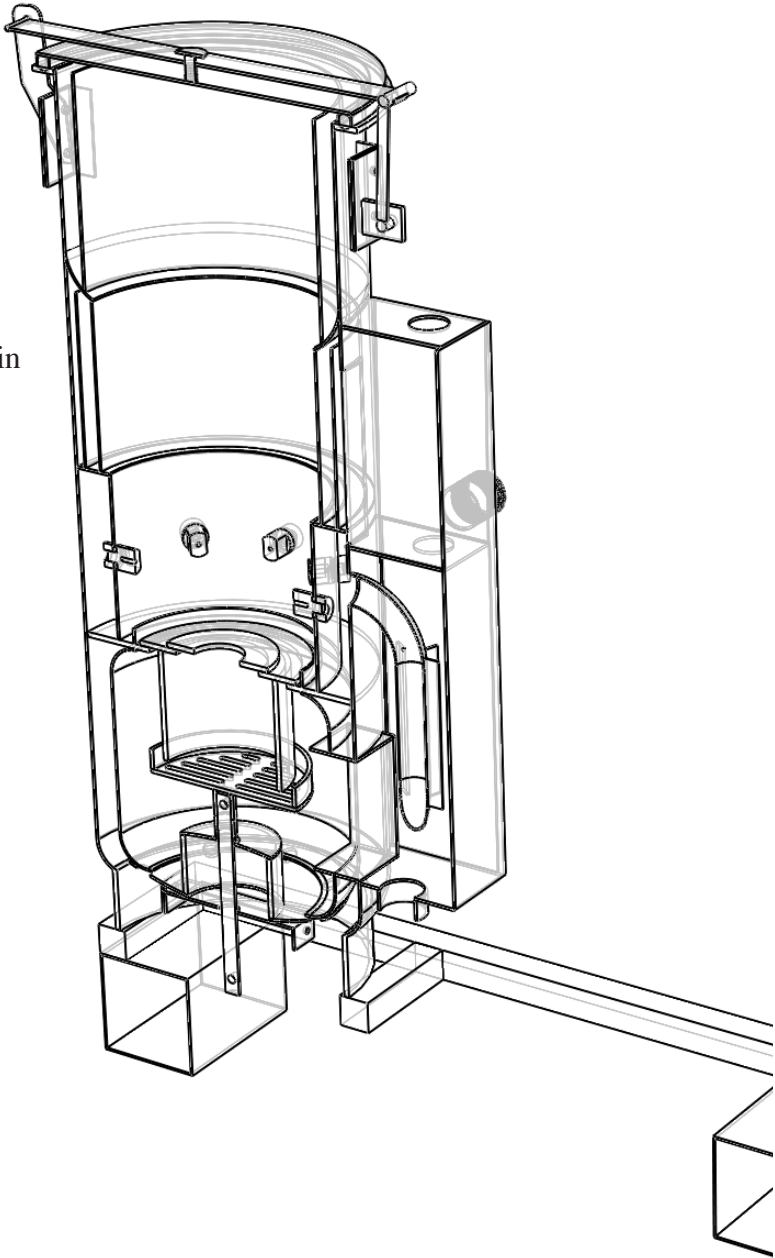
Pages 102-106

This drawing covers the heat recycling box.



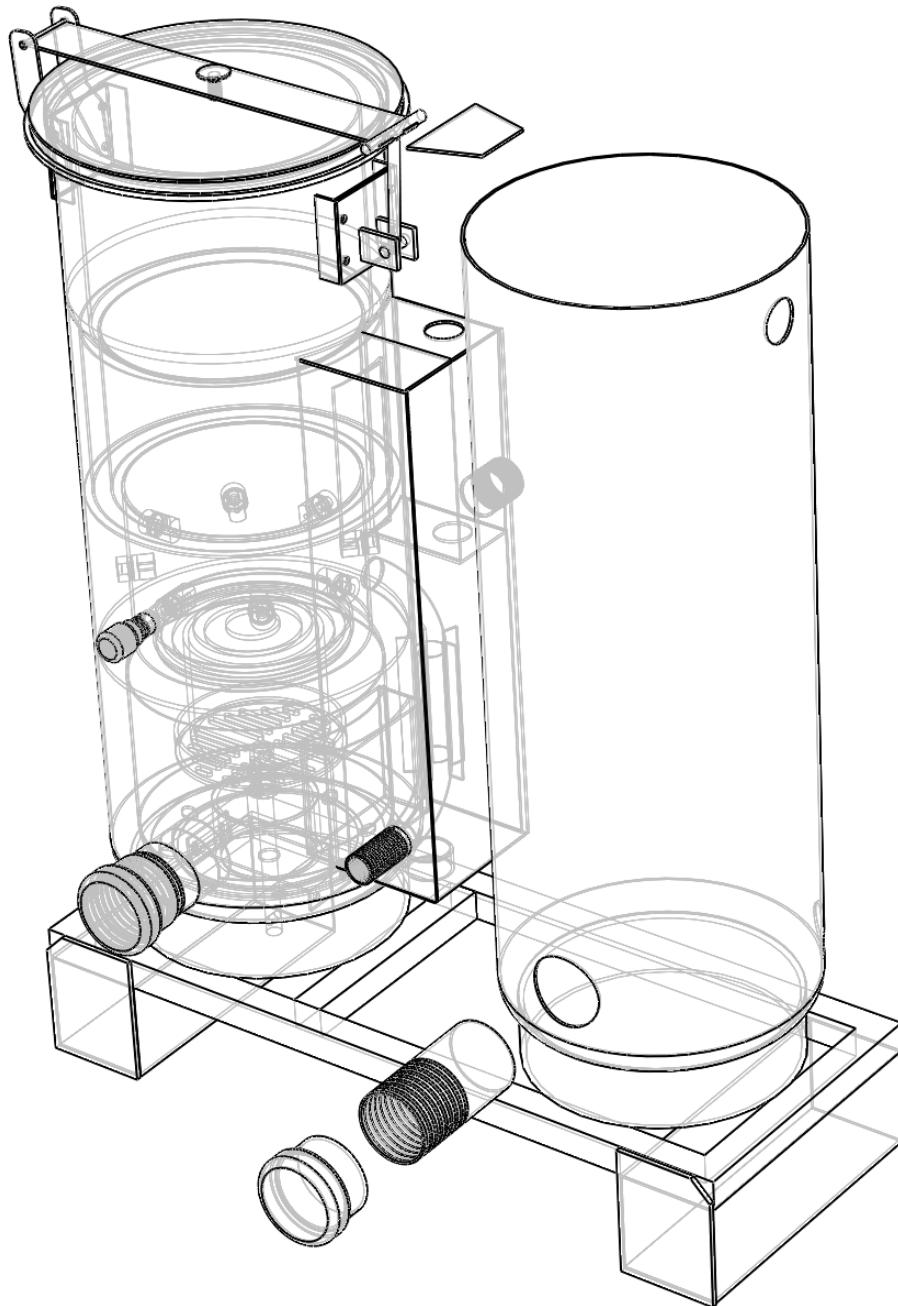
Cross Section Views

These drawing summarize the previous steps in a cross sectional view.



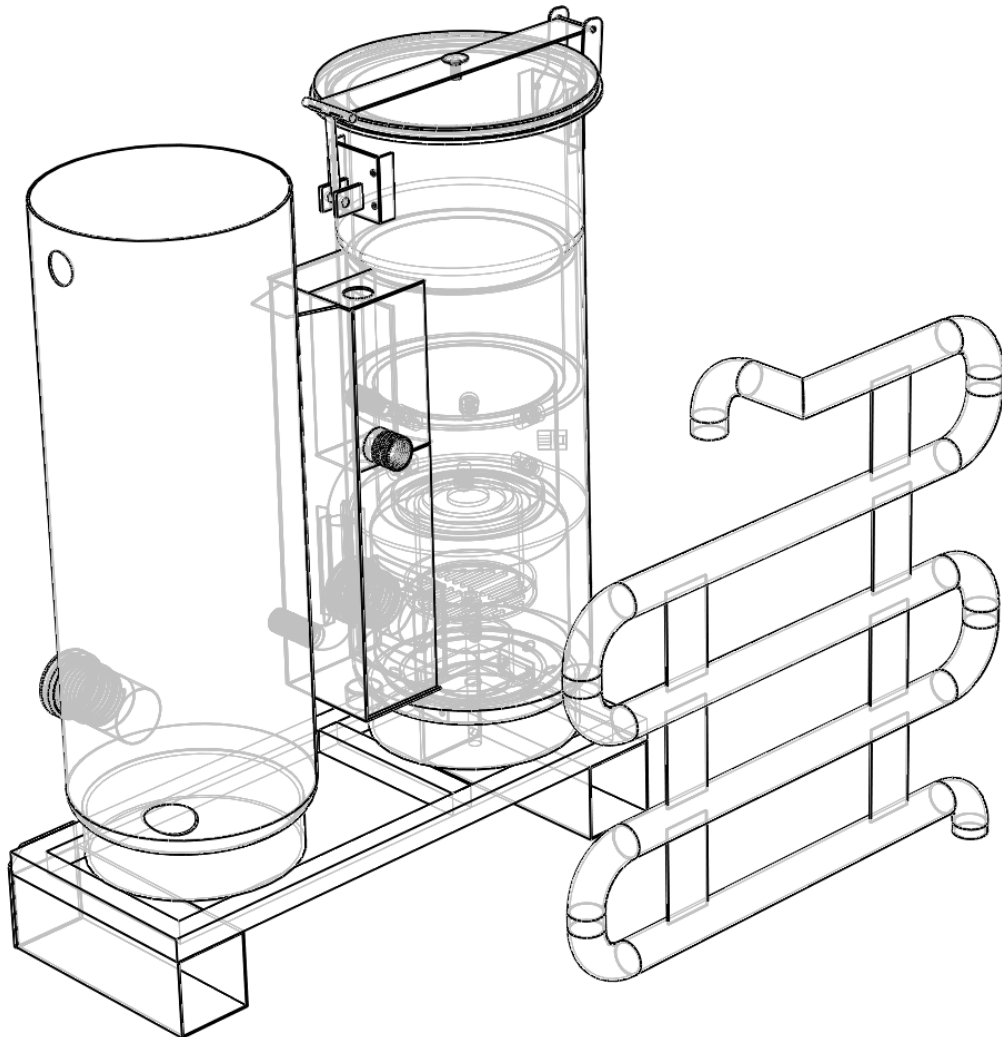
Pages 107-109

This drawing covers the filter housing.



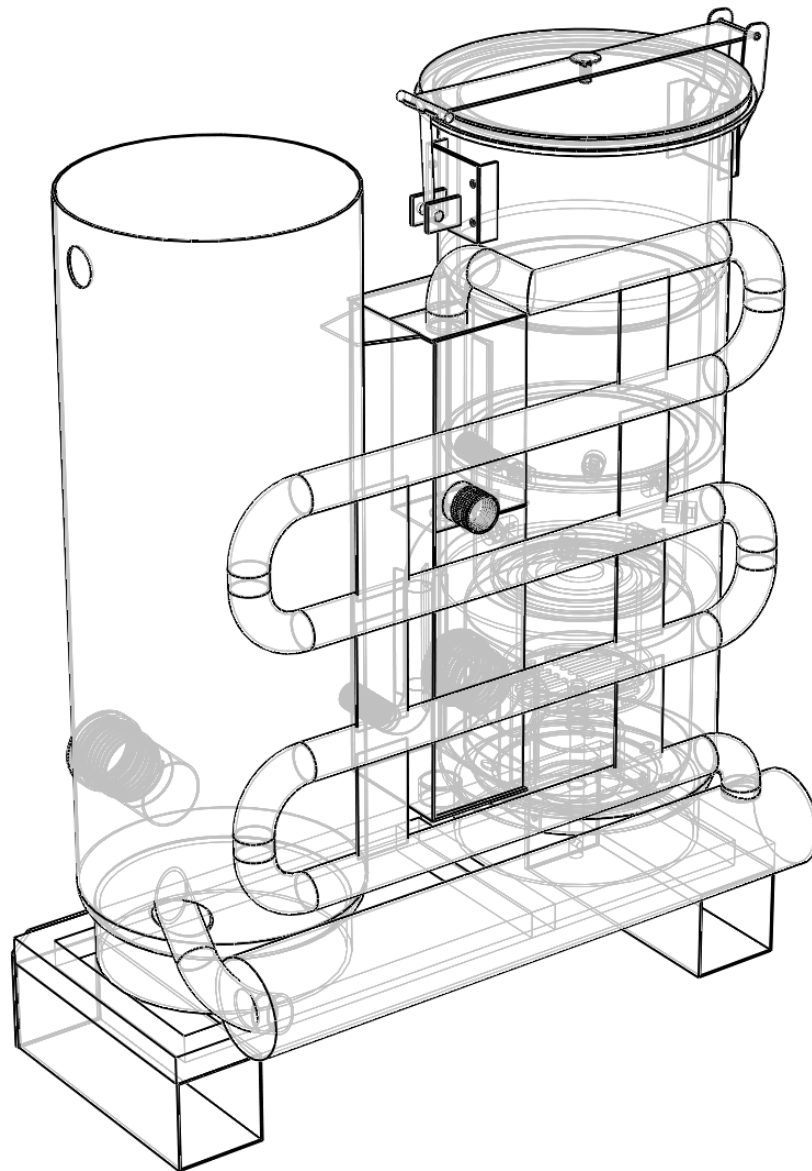
Pages 110-114

This drawing covers the cooler.



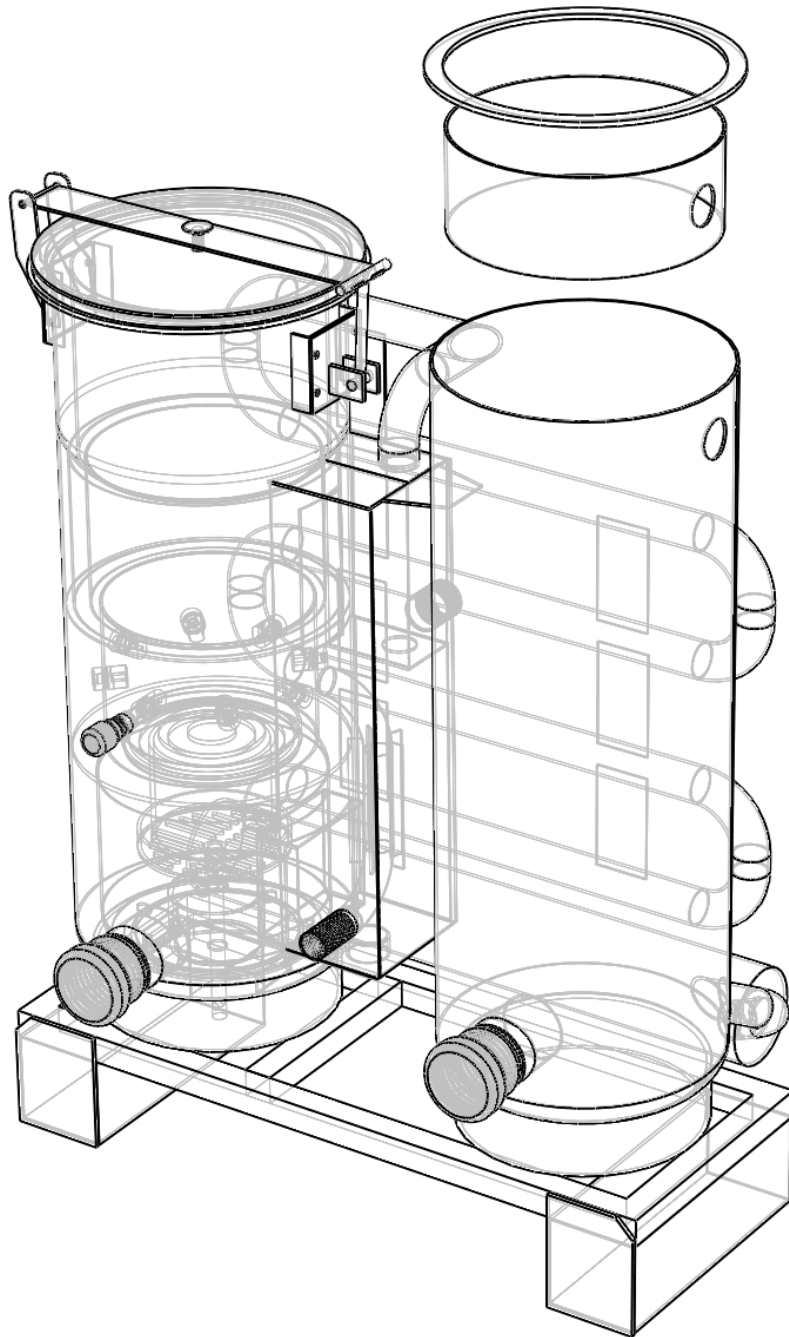
Pages 115-118

This drawing covers the condensate catch.



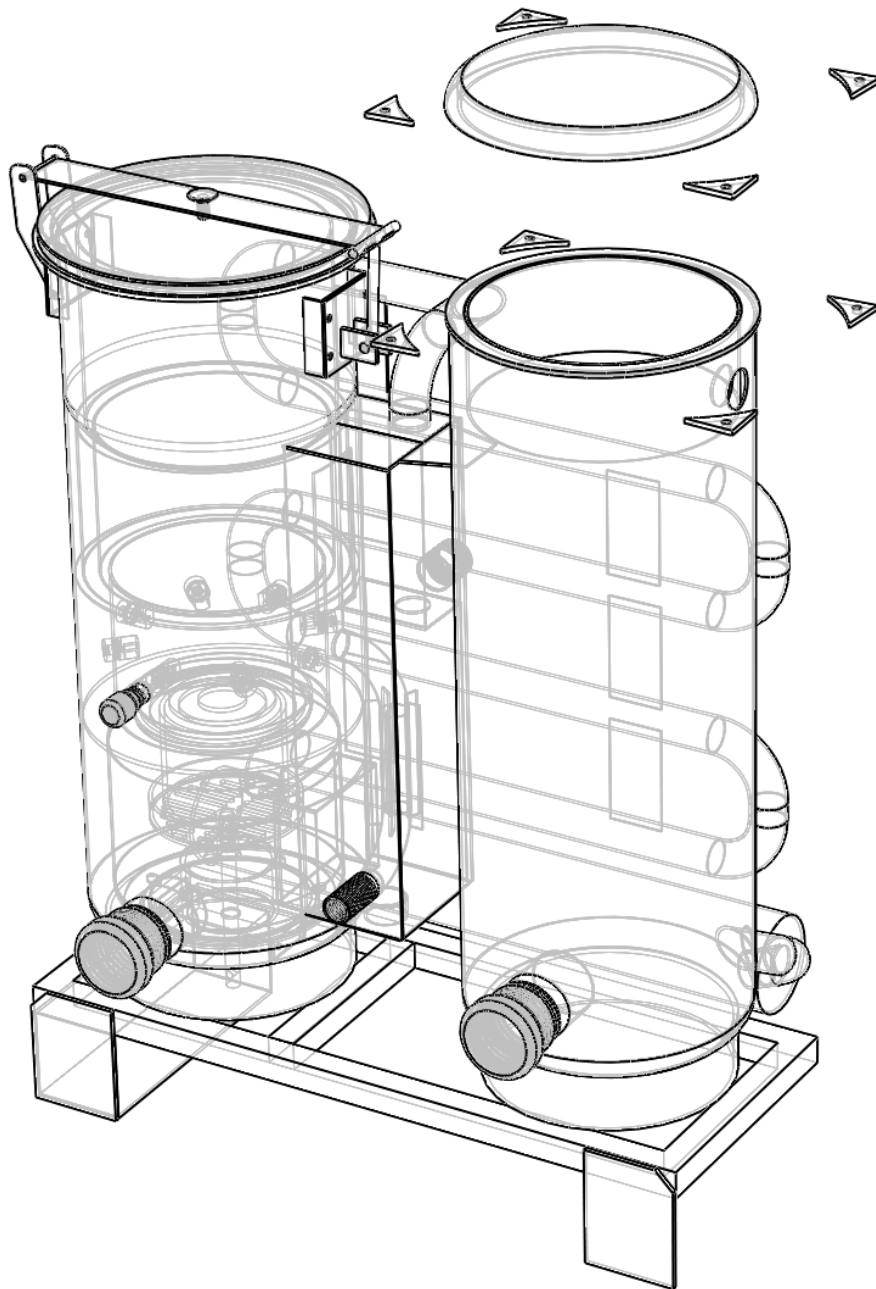
Pages 119-122

This drawing covers the filter top.



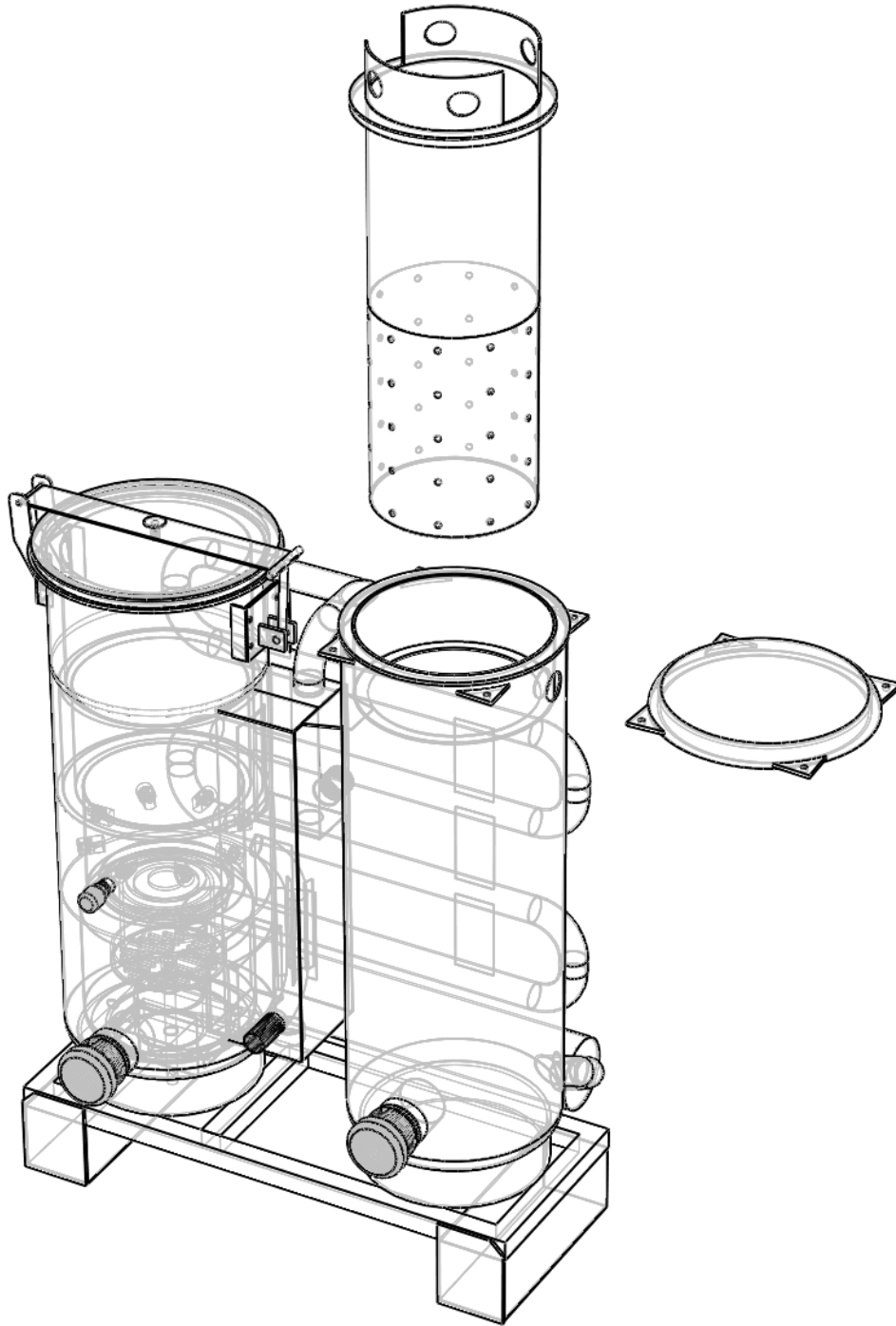
Pages 123-126

This drawing covers the filter lid and tabs.



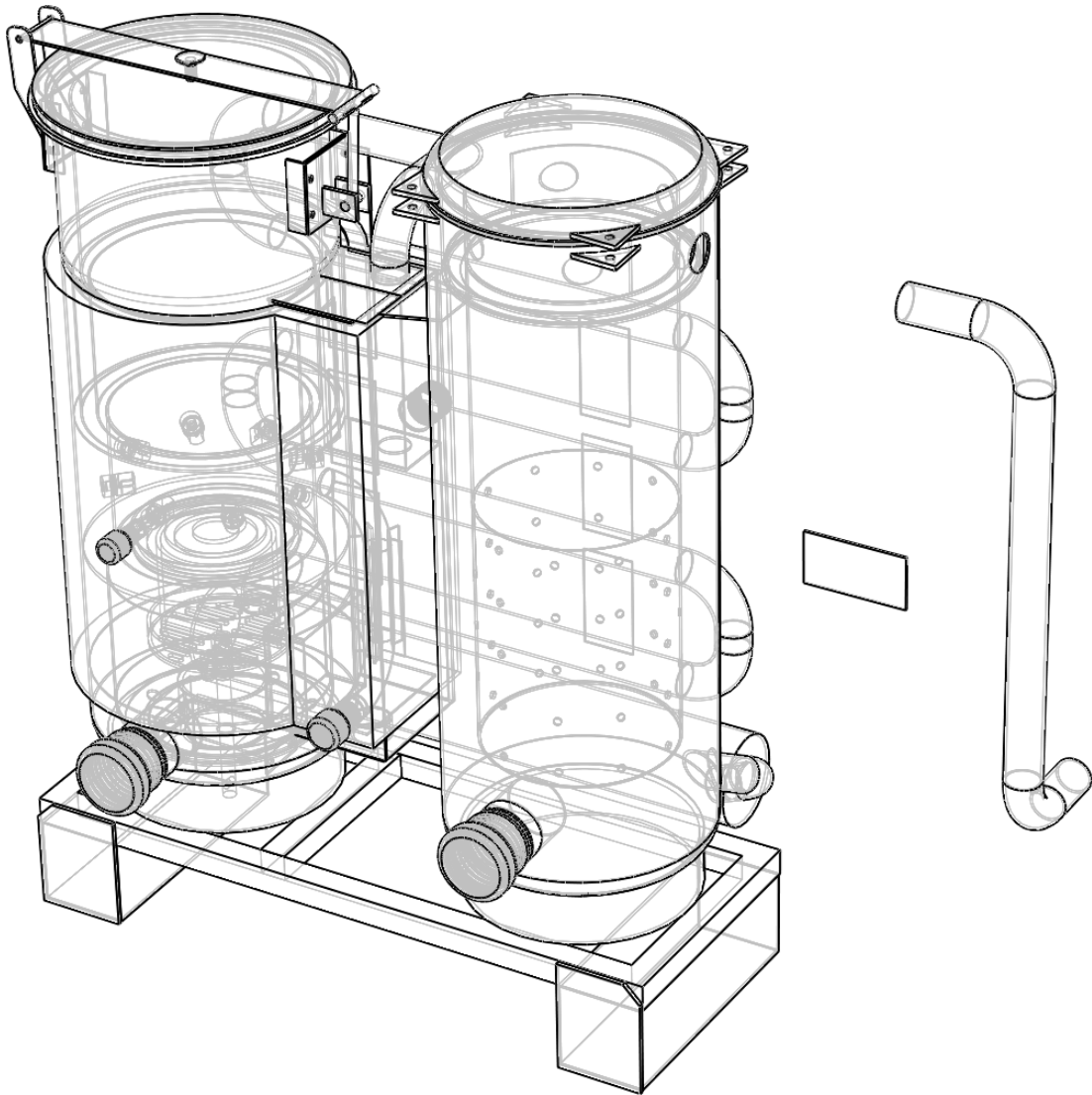
Pages 129-136

This drawing covers the filter insert.



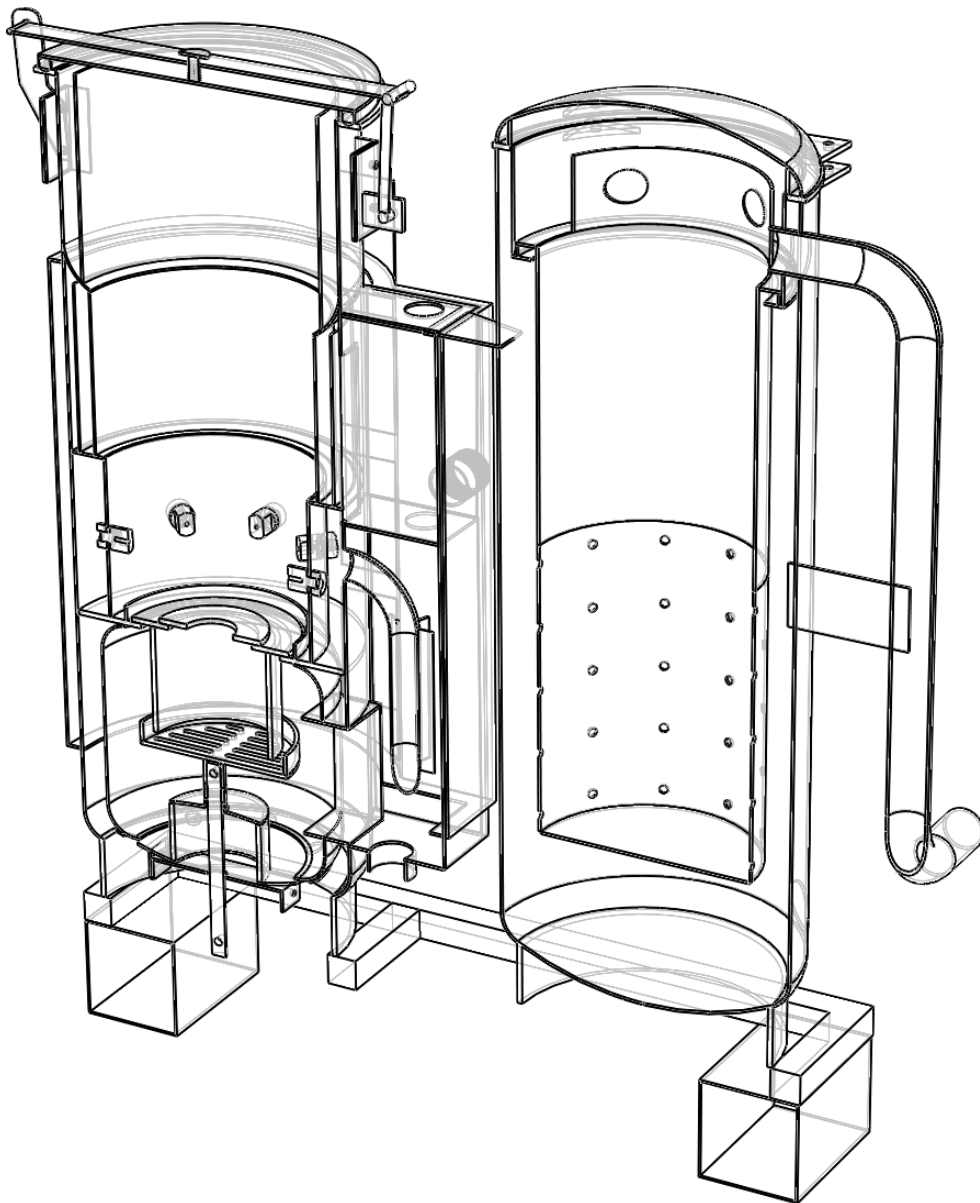
Pages 140-143

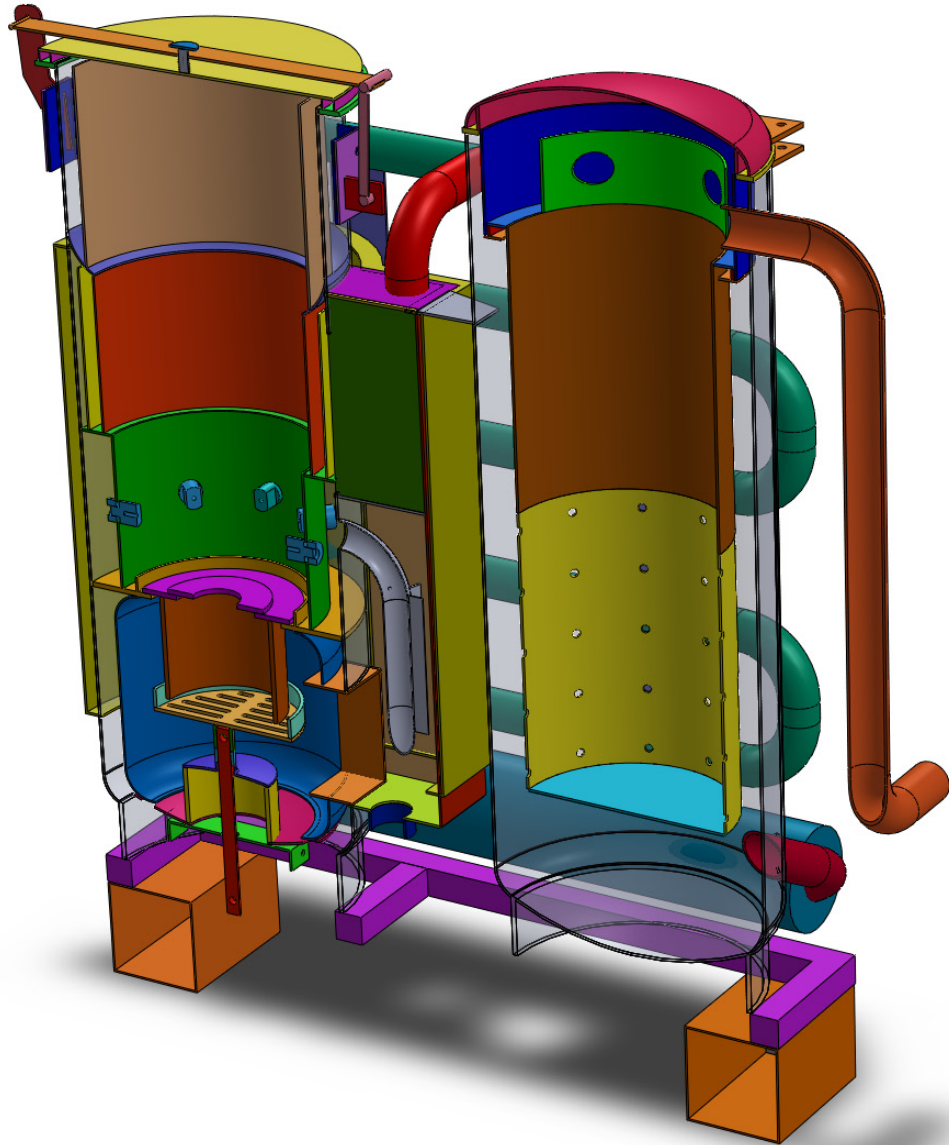
This drawing covers the filter gas exit tube.



Cross Section Views

These drawing summarize the previous steps in a cross sectional view.





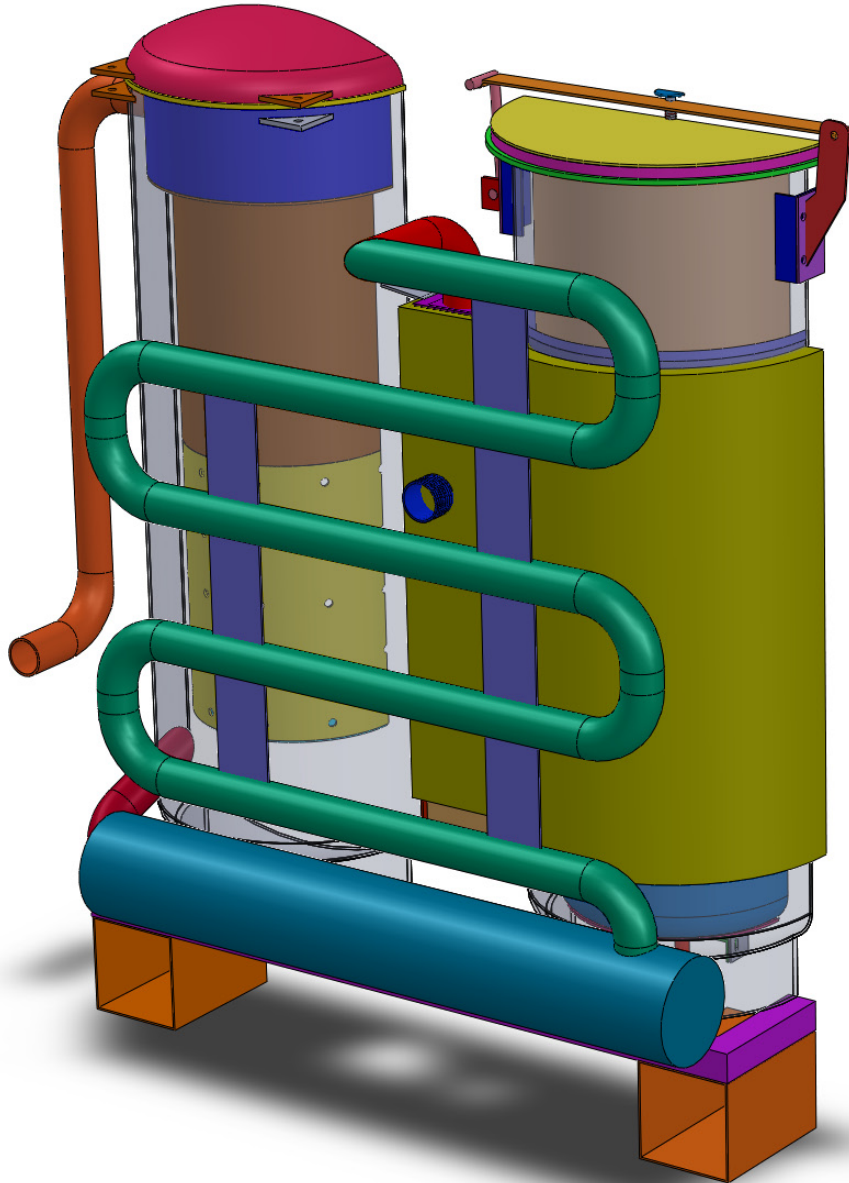
Cross Section Views

These drawing summarize the previous steps in a cross sectional view.

Thanks for reading

**Additional construction details are in the book:
The Wood Gasifier Builder's Bible**

If you enjoyed this then please tell a friend:)



Cross Section Views

These drawing summarize the previous steps in a cross sectional view.